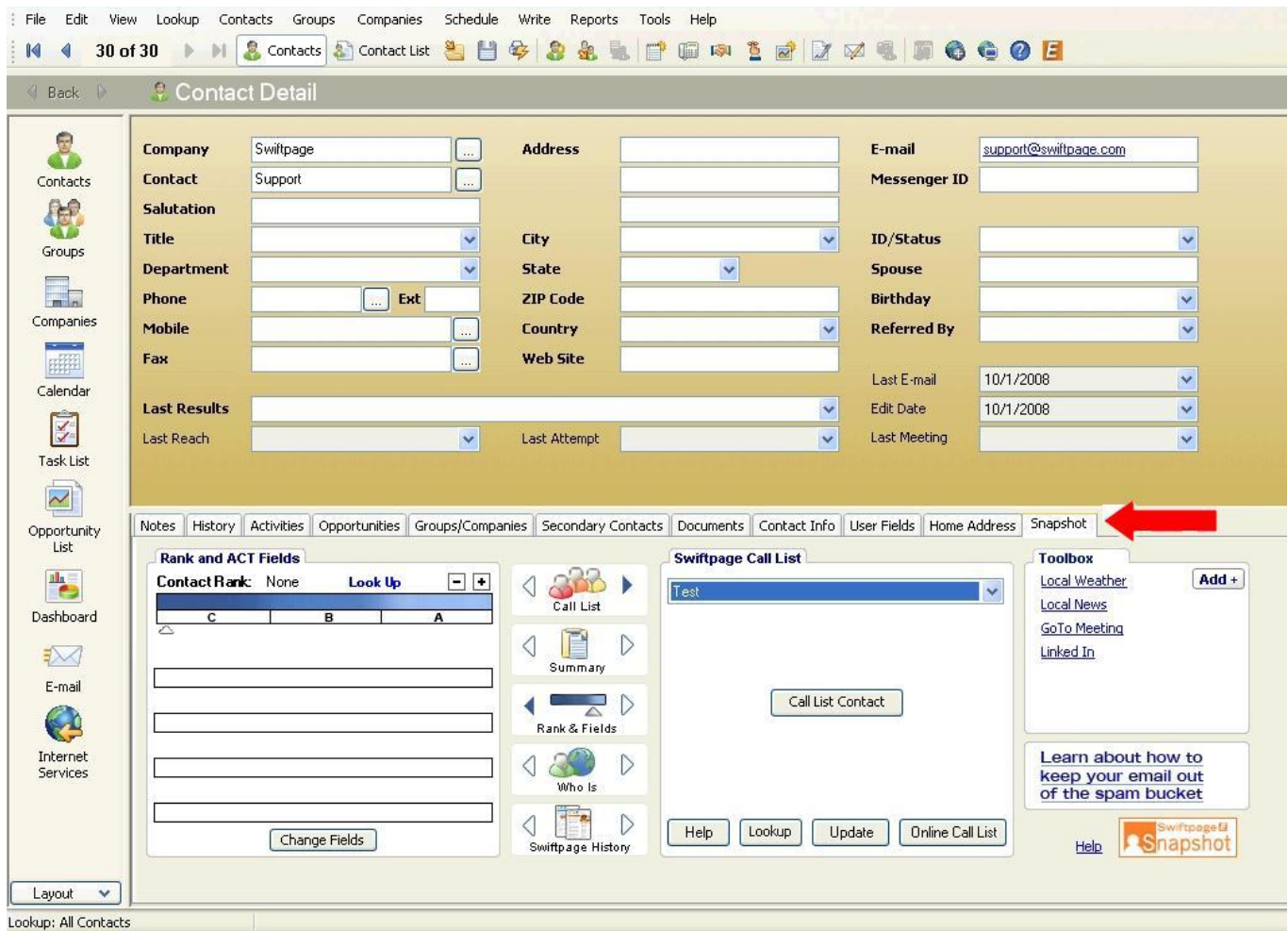


Quick Start Guide To:

The Swiftpage for ACT! Snapshot Tool: Location and Explanation

Snapshot is a new tab in the contact view of ACT! for Sage. Snapshot is just that—a snapshot into the life of your contact, the communications you have had with them, the email campaigns you have sent them and the ability to harness the power of the web with a number of tools just a click away.

To locate the Snapshot, go to the Contacts view in ACT! by clicking on a contact. You will find the Snapshot tab among the tabs toward the middle of the ACT! Contacts view screen, on the far right-hand side (see below).



You are now looking at the fully-integrated Snapshot tool. The contact you are looking at in ACT! corresponds to the contact information on the Snapshot tab.

The Snapshot tab includes the Call List tab, the Contact Summary and Notes tab, the Contact Rank tab, the Who Is tab, the Swiftpage Email History tab and the customized toolbox (on the far right-hand side) for utilizing your favorite web sites to look up information about your contact.